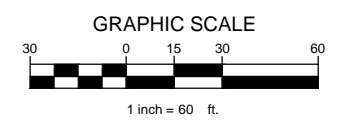
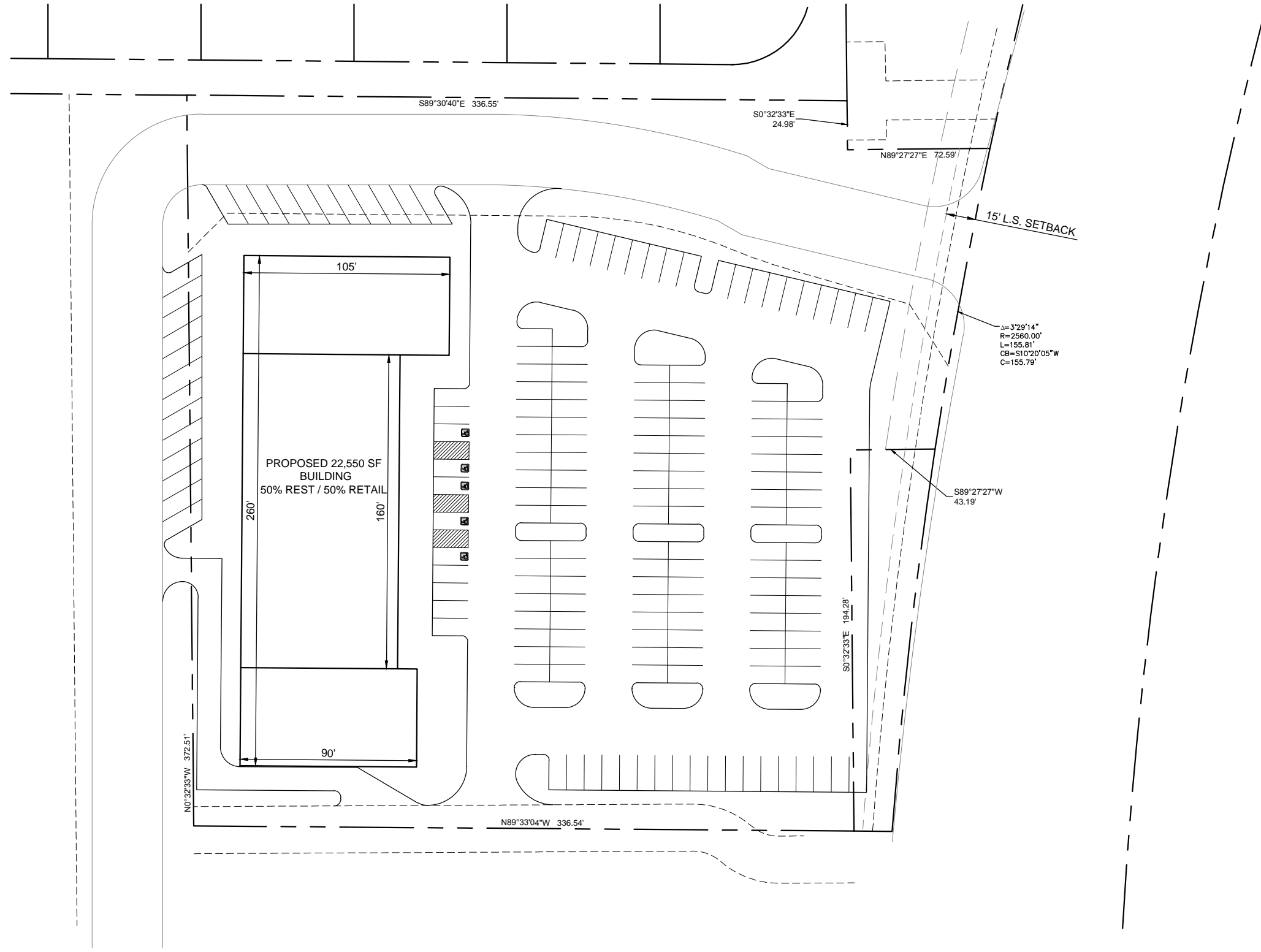


PLOTTED BY: DREW DONOSKY
 PLOT DATE: 7/8/2015 3:47 PM
 LOCATION: Z:\PROJECTS\MARKETING\VICTORY - WARREN LEGACY\CADD\BASE\YSITE.DWG
 LAST SAVED: 7/8/2015 2:33 PM



PARKING TABLE	
REQUIRED PARKING 22,550 SF (11,275 SF @ 1 SPACE PER 200)	169 SPACES (5 ADA)
(11,275 SF @ 1 SPACE PER 100)	
PARKING PROVIDED	174 SPACES (5 ADA)

TEXAS REGISTRATION #14199

 CLAY MOORE
 ENGINEERING
 1105 CHERRY SPARGER RD. SUITE #1
 COLLEVILLE, TX 78846
 PHONE: 817.261.0027
 WWW.CLAYMOORE.COM

**LEGACY AND WARREN
 FRISCO, TEXAS**

No.	DATE	REVISION	BY

CONCEPT SITE PLAN

DESIGN: CLC
 DRAWN: CLC
 CHECKED: MAM
 DATE: 7/8/2015
 SHEET
C-1
 File No.